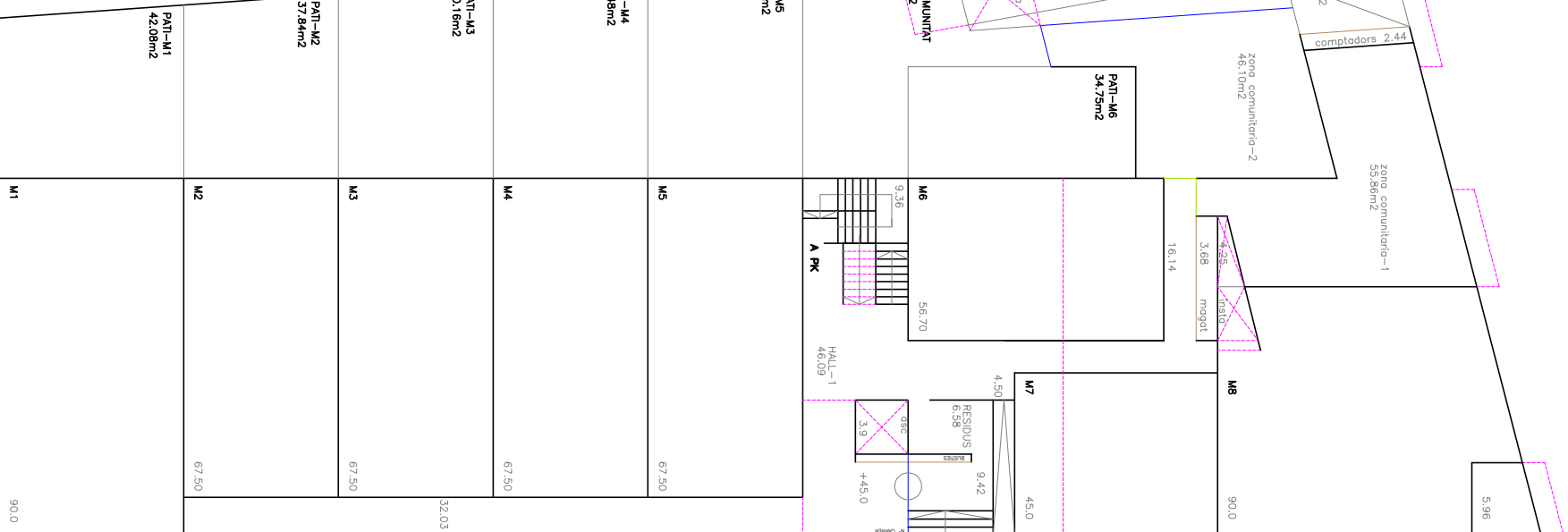


PLANTA SOTERRANI

**SUPERFICIE TOTAL PSOT 1.137,32m<sup>2</sup>**

ET 20,18m<sup>2</sup>  
 zona trasters 180,30m<sup>2</sup>  
 magat/instla 16,72m<sup>2</sup>  
 accessos 29,31m<sup>2</sup>  
 ascen 3,90m<sup>2</sup>  
 olib 21,84m<sup>2</sup>  
 aparcament 865,07m<sup>2</sup>

**28 PLACES APARCAMENT + 30 TRASTERS**  
**9 PLACES MOTO**



PLANTA BAIXA

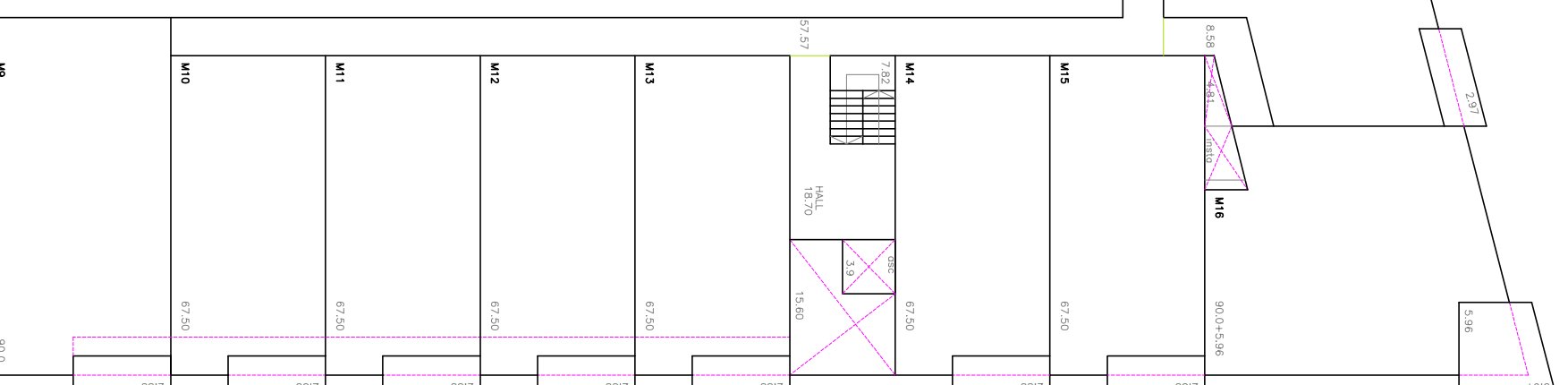
**SUP TOTAL FORATS/PAS INSTAL. (25,34m<sup>2</sup>)**

pati-trompo 7,83m<sup>2</sup>  
 pati-instla 4,25m<sup>2</sup>  
 ascen 3,90m<sup>2</sup>  
 esca pk 9,36m<sup>2</sup>

**8 MODULS HABITATGES+PATIS**  
**1 MODUL ZONA COMUNITARIA+PATI**  
**1 MODUL OFICINES ECOPIRAT**

**SUP CONST TOTAL PB 818,87m<sup>2</sup>**

rompo pk 44,33m<sup>2</sup>  
 rompa minus 4,50m<sup>2</sup>  
 comptadors 2,44m<sup>2</sup>  
 magatzem 3,68m<sup>2</sup>  
 residus 6,58m<sup>2</sup>  
 cancel 9,42m<sup>2</sup>  
 posos 48,17m<sup>2</sup>  
 hall-1 46,09m<sup>2</sup>  
 unitat M1 90,0m<sup>2</sup>  
 unitat (4) M2-M5 67,50m<sup>2</sup>  
 unitat M6 56,70m<sup>2</sup>  
 unitat M7 45,0m<sup>2</sup>  
 unitat M8 90,0m<sup>2</sup>  
 zona comunitario-1 55,86m<sup>2</sup>  
 zona comunitario-2 46,10m<sup>2</sup>



PLANTA PRIMERA

**SUP TOTAL FORATS/PAS INSTAL. (24,31m<sup>2</sup>)**

pati-instla 4,81m<sup>2</sup>  
 forat-esca 15,60m<sup>2</sup>  
 ascen 3,90m<sup>2</sup>

**10 MODULS**

**SUP CONST TOTAL P1 812,67m<sup>2</sup>m<sup>2</sup>**  
**(812,67m<sup>2</sup> + 37,07m<sup>2</sup> balcon)**

posos 66,15m<sup>2</sup>  
 hall 18,70m<sup>2</sup>  
 esca 7,82m<sup>2</sup>  
 unitat M9 90,00m<sup>2</sup>  
 unitat (6) M10-M15 67,50m<sup>2</sup>  
 unitat M16 90,00m<sup>2</sup>  
 unitat M17 67,50m<sup>2</sup>  
 unitat M18 67,50m<sup>2</sup>